

Araucana
Ameraucana
Americana or the Easter Eggers
“What eggsactly is the difference?”

*Excerpts of this article was taken by an article written by Patty Pickard, Ohio
and edited by the APA-ABA Youth Program director.*

*Drawings we submitted by the Ameraucana Club of America. www.ameraucana.org
Visit Patty Pickard's website: <http://www.faithvalleywaterfowl.com>*

What is the difference between these breeds of chickens? This is the most commonly asked question, the one that folks have been asking for a long time especially the general public that sees the different color eggs and wonder which one of the chickens in the showroom lay them.

There are very definitive differences in the looks of these breeds and usually you can tell from a quick glance which one is which. But! You have to have the knowledge and learn what they look like to tell the difference, so we are going to show you here. Plus on the chart on the last page you can compare the differences side by side.

If you are an exhibitor of any breed of poultry you know you can find the answers to all of your questions in the *American Standard of Perfection* but not everyone has this book readily at hand.

Unfortunately we don't have any pictures of the Americana or the Easter Egger but we can give you a basic description of what you "might" see.

The EASTER EGGER OR AMERICANA as people like to call them are actually a mish-mash of mixed breeds, with definitely some of the lethal gene of the Araucana or Ameraucana mixed in. This is what causes them to lay eggs of several different colors. The eggs can be anywhere from light tan, dark tan, blue, pinkish or even a pale yellow.

These chickens are actually very pretty, with a mix of color in their feathers and they are often found in the backyard flock that farmers use for egg layers. Of course with all of the beautiful colors they became known as the Easter Eggers because they look like eggs we color for Easter.

Let's talk about the description of the Easter Egger or Americana birds. What does one look like? Well, they can look like the Ameraucana (see picture below) with some traits of the Araucana included. This might be the ear tufts or ear muffs that are a trait of the Araucana. Their body type is most like the Ameraucana normally but sometimes they don't have much of a tail, at least not like the Ameraucana.

Being these Easter Eggers are a cross breed type of chicken their feathers can be as colorful as a painting with every color imaginable on one bird, whereby the two standard breeds have very definite colors indicative of their particular breeds.

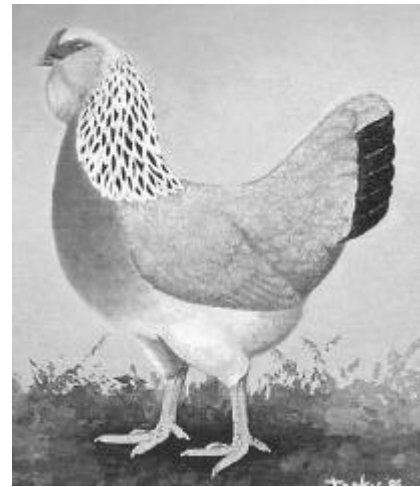
The AMERAUCANA and the ARAUCANA are both fancy purebred breeds that are listed in the *American Standard of Perfection* published by the American Poultry Association and the *Bantam Standard* that is published by the American Bantam Association.

The EASTER EGGER/AMERICANA is a cross breed that hatcheries sell to fill the need of the hobby farmer that wants a colorful backyard flock and beautiful eggs. If you don't wish to show your birds, the Easter Egger is the perfect bird for you.



The AMERAUCANA

Has Ear *Muffs*
Blue Shanks (legs)
Red Ear Lobes
Beautiful Tail
Lays Blue Eggs only
Comes in 8 different varieties (colors) recognized by the APA and the ABA.
They can be large fowl or bantams.



The ARAUCANA

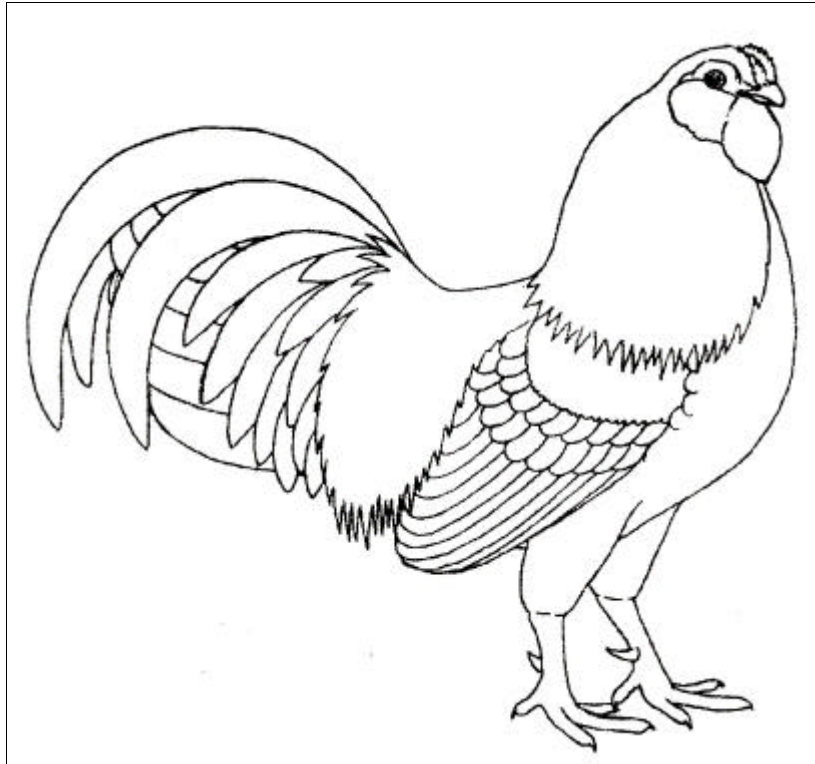
Has Ear *Tufts*
No Definitive Tail
Lays Blue Eggs only
Comes in 5 different varieties (colors) recognized by the APA and 6 different varieties recognized by the ABA.
They can be large fowl or bantams.



For more information on these breeds you can visit the websites by Googling www.ameraucana.org or www.araucanaclubofamerica.org

ARAUCANA	AMERAUCANA	AMERICANA - EASTER EGGER
Admitted into the APA Standard in 1976	Admitted into the APA Standard in 1984	NOT recognized by the APA nor the ABA
Has Ear <i>TUFTS</i>	Has Ear <i>MUFFS</i>	Can have either or none
Has no tail	Has a definite tail.	May have a tail and may not have a tail or a little of both.
Tight Feathering	Looser Feathering	Can have either feathering
<i>Large Fowl Weight</i> Male 5 lbs. Female 4 lbs <i>Bantam Weight</i> Male 28 oz. Female 26 oz.	<i>Large Fowl Weight</i> Male 6 1/2 lbs Female 5 1/2 lbs <i>Bantam Weight</i> Male 30 oz. Female 26 oz.	Any weight is acceptable
Back is flat, slopes slightly at the tail	Back is slightly elevated at the shoulders	Any posture is fine
Eyes can be red, brown or Reddish bay	Eyes—reddish bay only	Can be any color
Legs green or willow Bottom of foot—yellow	Legs—Blue Slate Bottom of foot—white	Can be any color
Pea Comb	Pea Comb	Any comb
Red earlobes	Red earlobes	Any color earlobes
Small wattles	Small wattles	Any size wattles
Blue Eggs	Blue Eggs	Any color eggs

*Excerpts of this article was taken by an article written by Patty Pickard, Ohio
and edited by the APA-ABA Youth Program director.*



These drawings show the *pronounced muffs* that are an important part of the Ameraucana breed.

The drawing can be downloaded by the public and colored by our junior exhibitors on the Ameraucana Breeders club website. www.ameraucana.org

